



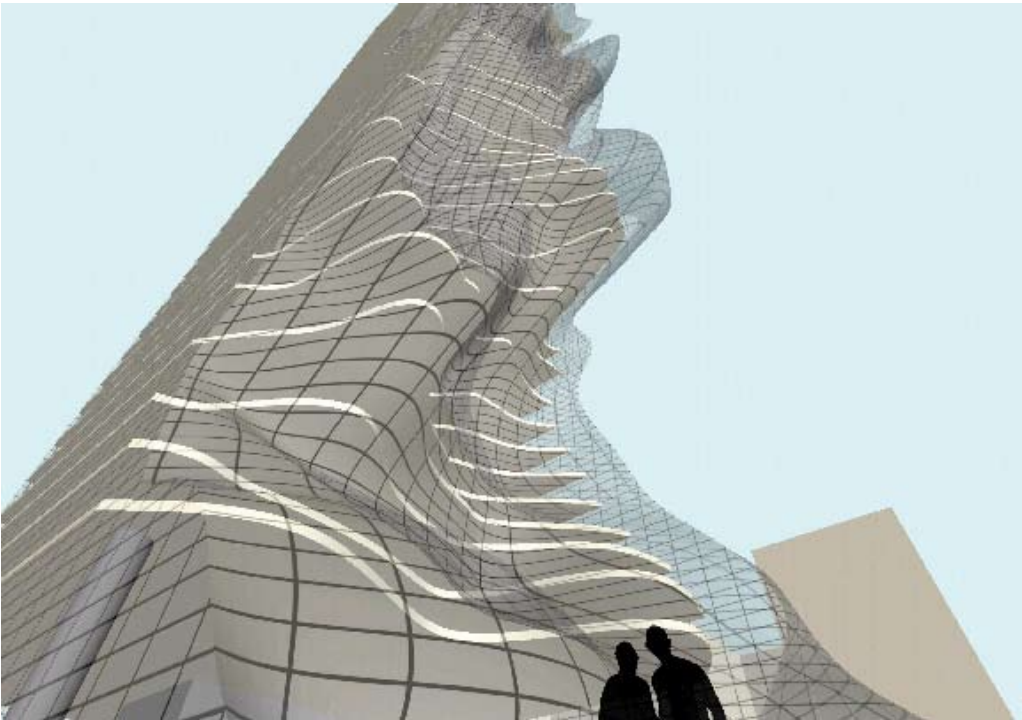


SOUND CITY

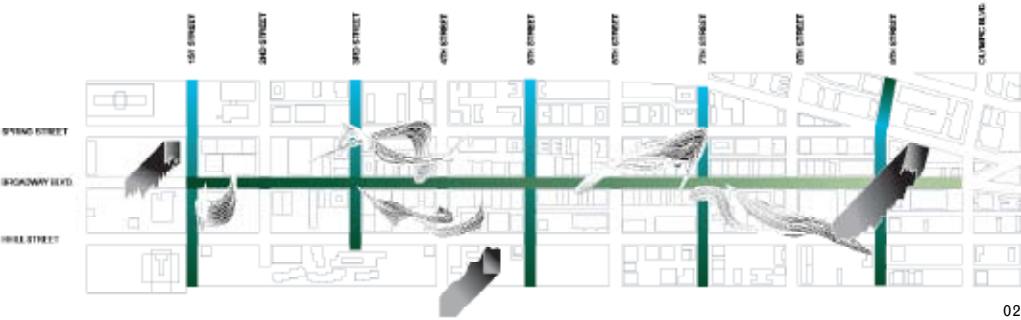
Sound City is an urban development study for downtown Los Angeles that explores the use of sound as an architectural design tool. The programmatic outline was to add a variety of public spaces to the site in combination with mixed use development. The design concept was to generate a master plan in which building envelopes and massing are determined not only by zoning regulations, sightlines and the city grid, but are shaped by sound clouds recorded on the site and transformed into a three dimensional Gestalt. This became the starting point for a series of spatial prototypes that occupy the existing grid structure and envelope.

01 Mixed-use tower façade 02 Siteplan 03 Flex shell 01 Mixed-use tower 05 Interior 06 Model

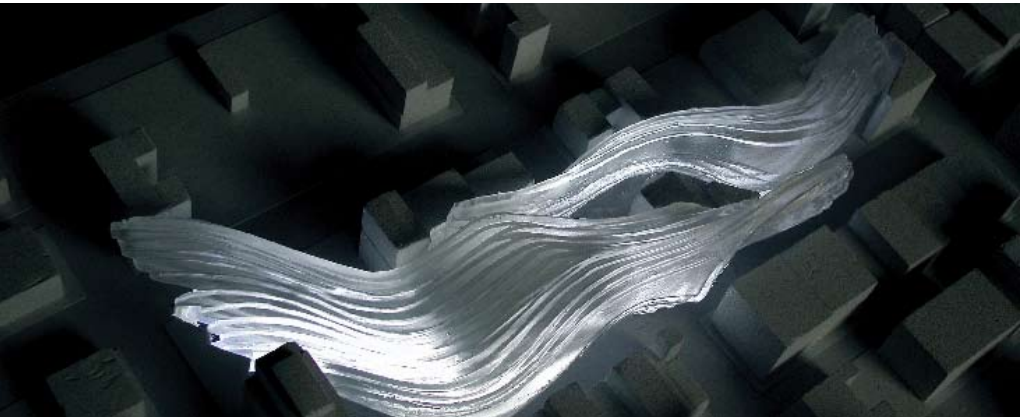
Renderings, photos: B+U, LLP



01



02



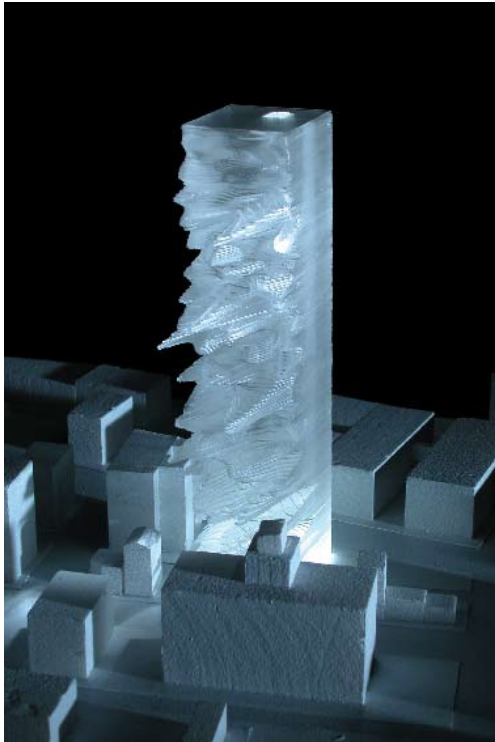
03



05



04



06