

daily coverage

16,925 articles

via

 email

 RSS

 twitter

 facebook

view content:



[in brief](#)



[in full](#)

articles:



[today](#)



[yesterday](#)

most popular:



[this week](#)



[this month](#)



[all time](#)

B + U architects: mixed used building, LA



mixed use office building by B + U architects
all images courtesy B + U architects

american [B + U architects](#) have developed a proposal for a mixed use office building in los angeles, california - a landmark building aiming to enhance the cities vision as the premier quality city in the southeast area of los angeles county and to revitalize the industrial landscape of the site into a vital urban environment.

the project is characterized by its response to the urban setting, its vision for the office work environment within a highly sustainable building design, and by its formal and structural elegance. the three level



text



images

search



Ads by Google

Architectural Drafting

Autodesk has the tools & technology to bring your designs to life!

[Autodesk.com/Architecture](#)

DESIGN-AEROBICS



[new 2010 courses:](#)

[history & future cycle](#)

[body & mind cycle](#)

[view index](#)

COMPETITIONS



[design for all](#)

[the intelligent hand](#)

[nissan parking results](#)

[view index](#)

california - a landmark building aiming to enhance the city's vision as the premier quality city in the southeast area of los angeles county and to revitalize the industrial landscape of the site into a vital urban environment.

the project is characterized by its response to the urban setting, its vision for the office work environment within a highly sustainable building design, and by its formal and structural elegance. the three level mixed use building includes a café and retail space at the ground floor and two levels of open office spaces above. the office spaces are configured around a center atrium space that opens up to the street creating the main entrance for the building. the ephemeral quality of the building envelope is realized through a high tech fabric enclosure system that utilizes multiple layers of fabrics with different degrees of transparencies/ opacities. this envelope is able to adjust to the different exterior light conditions and provide consistent natural daylight levels throughout the office spaces. while the more delicate fabric encloses for the upper two office levels, the restaurant and retail spaces on the ground floor open up to the street with a glass envelope. landscape elements create a green barrier between the outdoor seating area of the café and the street.



street view



MB&F
HOROLOGICAL LAB

art
architecture
design
technology

updates

browse a specific topic in depth



[naoto fukasawa](#)
26 articles



[automotive curiosity](#)
15 articles



[street art](#)
26 articles



[suppose design office](#)
15 articles



[bikes](#)

[the intelligent hand](#)
[nissan parking results](#)
[view index](#)

INTERVIEWS



[pei zhu](#)
[roikind arquitectos](#)
[MAD architects](#)
[view index](#)

ART



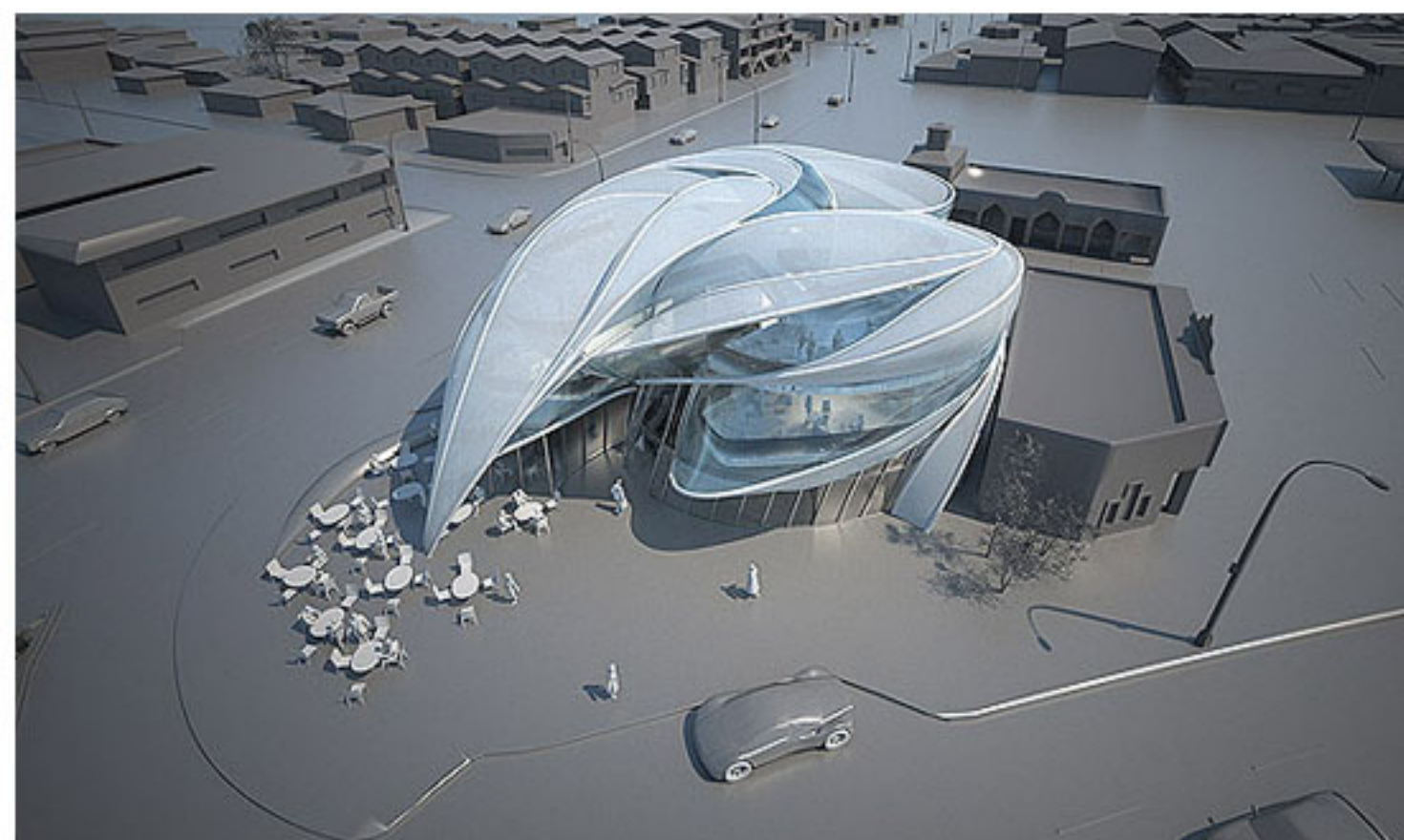
[angela ellsworth: seer bonnets - a continuing offense](#)
[bohyun yoon: mirror mask](#)
[tomas gabzdil libertyny: unbearable lightness](#)
[view index](#)

ARCHITECTURE





street view



view from above



[henning larsen architects](#)
4 articles



[jorge manes](#)
7 articles



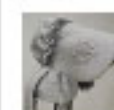
[korean art](#)
17 articles



[mobile phones](#)
3 articles



[LED](#)
16 articles



[biennale of sydney 2010](#)
9 articles



[ronan and erwan
bouroullec](#)
22 articles



[SANAA](#)
18 articles



[dingbat 2.0](#)
2 articles



[design miami basel 2010](#)
9 articles



[studio libertiny](#)
2 articles



[lego](#)
23 articles



[robots](#)
67 articles



[designboom book reports](#)
30 articles

[iran](#)

[tongji university:
bamboo house](#)

[view index](#)

DESIGN



[ronan + erwan
bouroullec: axor
bathroom collection](#)

[tim vinke: kruikantoor](#)

[mirko mielke: le
confident / la causeuse](#)

[view index](#)

SHOP



[love ring](#)

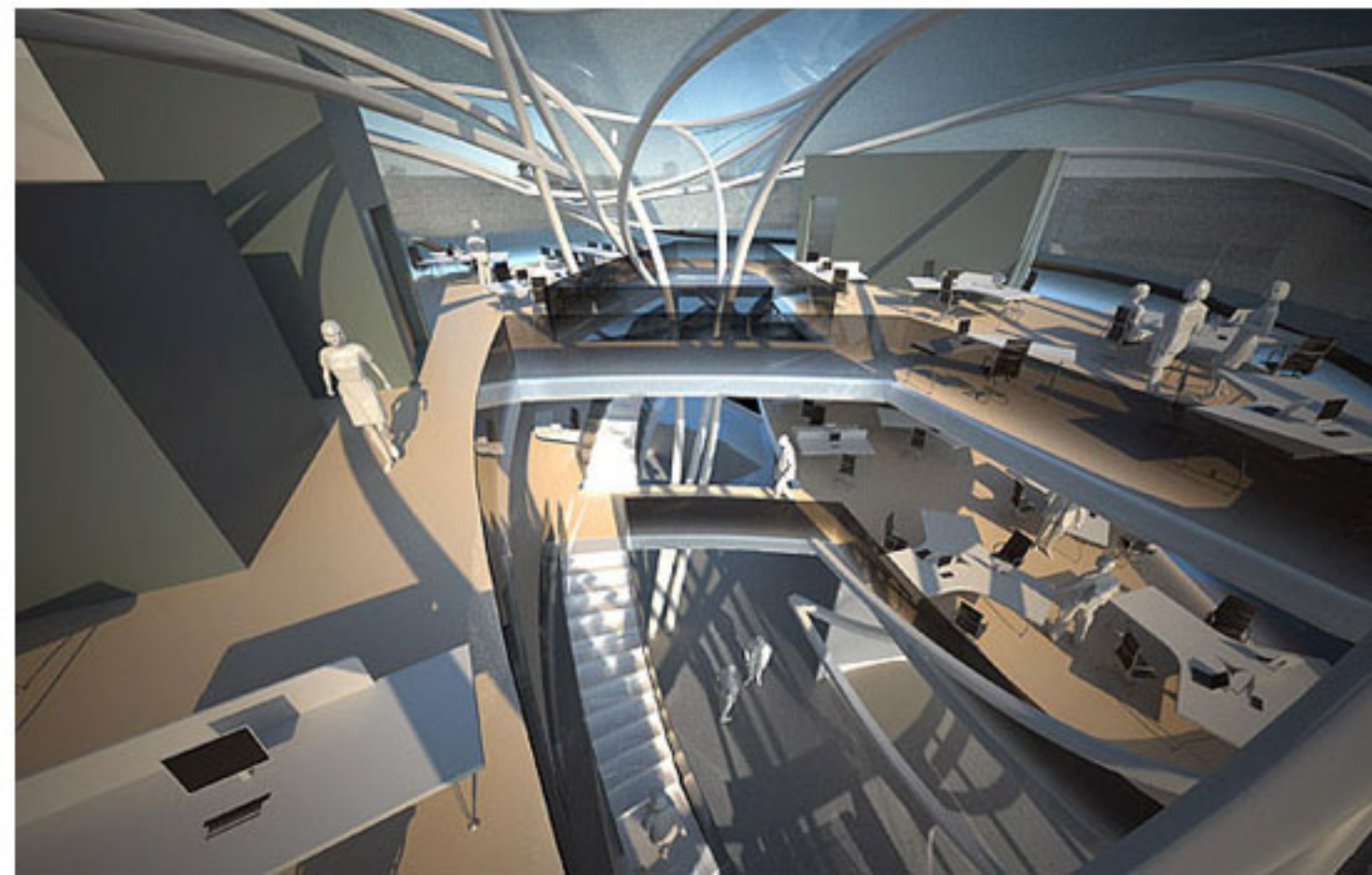
[endless rain record](#)

[polaroid mirror](#)

[view index](#)



view from above



comments

latest comments

- Beth**
[terrafugia flying car:](#)
[I want one. ...](#)
-
- daniel morel**
[suppose design office: house in fukuyama:](#)
[great designs and details ...](#)
-
- Billy J**
[space150: forever 21 interactive billboard:](#)
[Thanks for the post! We're reall ...](#)
-
- maxsss**
[lyons and conrad gargett architecture: queensland children's hospital:](#)
[awesome! millions of boring hosp ...](#)
-
- rovs1**
[evan roth: 3D graffiti sculptures:](#)
[Pretty disgusting behavior any w ...](#)
-
- AllCityIn'84**
[evan roth: 3D graffiti sculptures:](#)
[Ignorant bourgeois fixation with ...](#)
-
- m_daus**
[lyons and conrad gargett architecture: queensland children's hospital:](#)
[this is a nightmare in building ...](#)
-
- John A.**
[lyons and conrad gargett architecture: queensland children's hospital:](#)
[I'm sure the inhuman scale of th ...](#)
-
- amin**
[space150: forever 21 interactive billboard:](#)
[this is getting ridiculous.. che ...](#)
-
- Natalia S.**
[bohyun yoon: fragmentation:](#)
[Excellent ...](#)



interior



interior

archive

designboom * articles
unique random visualization



[urban lighting](#)



[solar power](#)



[salone satellite 2010](#)



[new york design week 2010](#)



[reiser umemoto architects](#)



[children's hospital africa](#)



[designboom book poor ie reports](#)



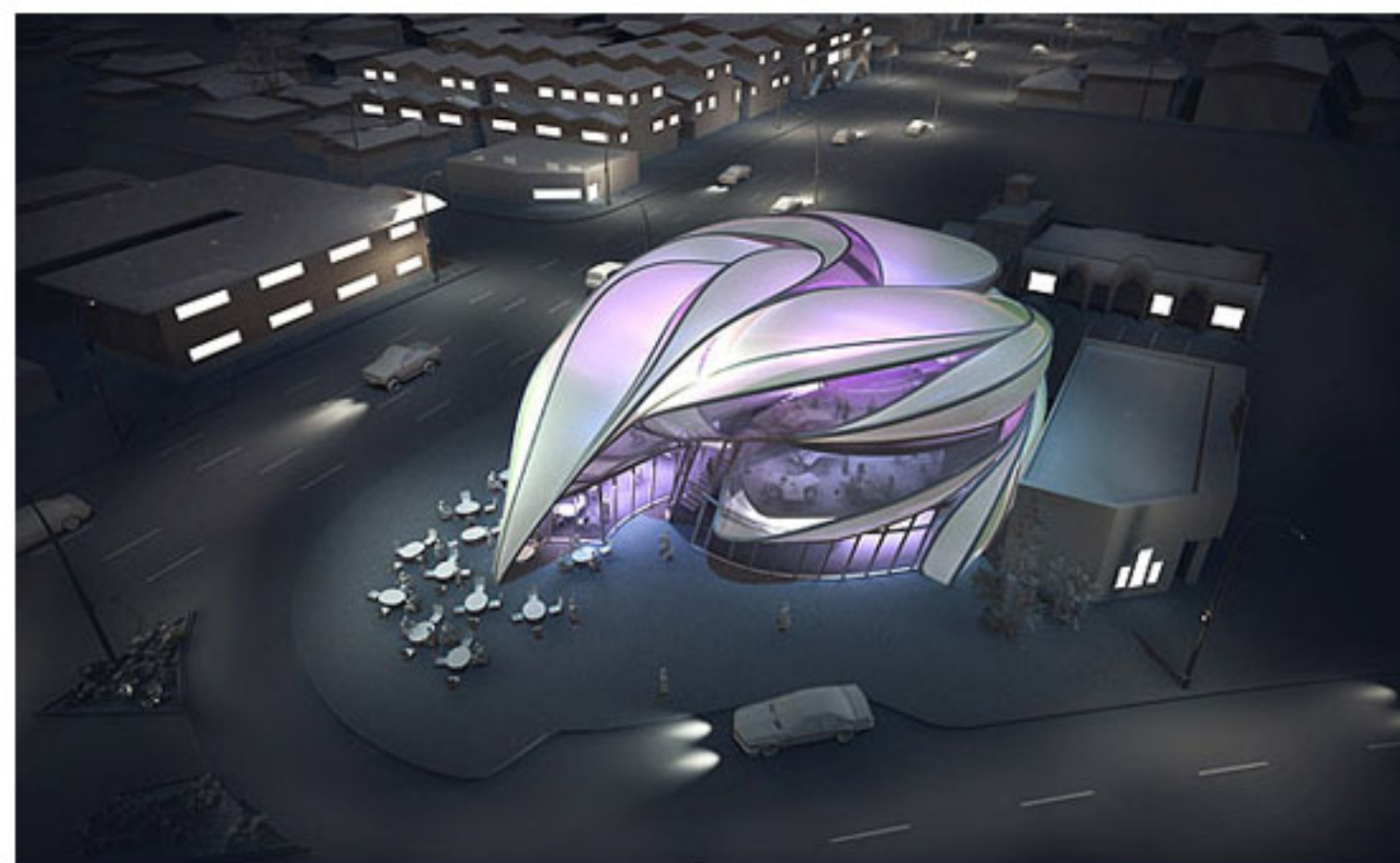
[UNstudio](#)



[we architecture](#)



view at night



view at night

ING DIRECT
Save your money

The Orange Savings AccountSM

- Join 8 million other Super Savers
- Make a small deposit to get started

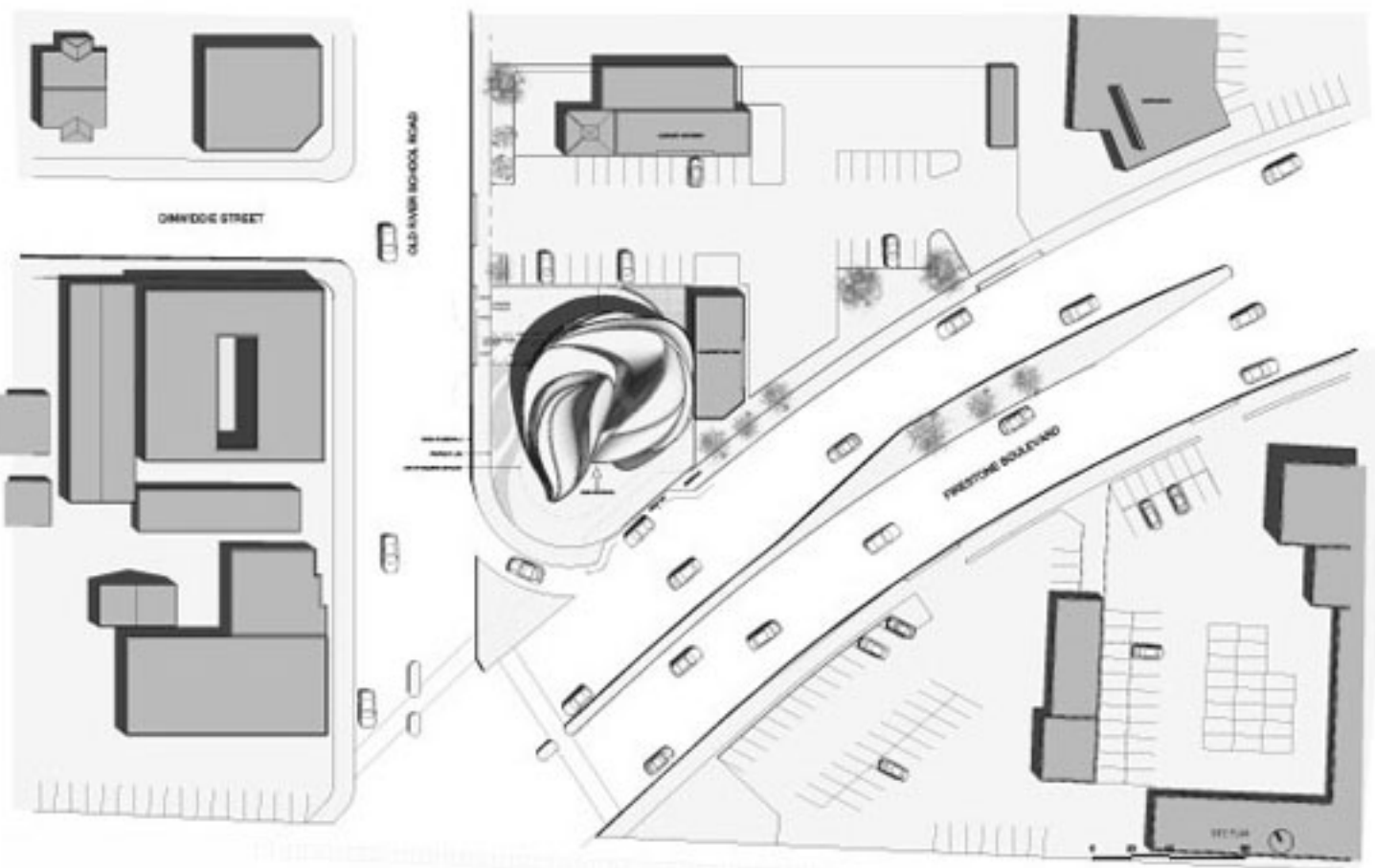
Start saving today ▶



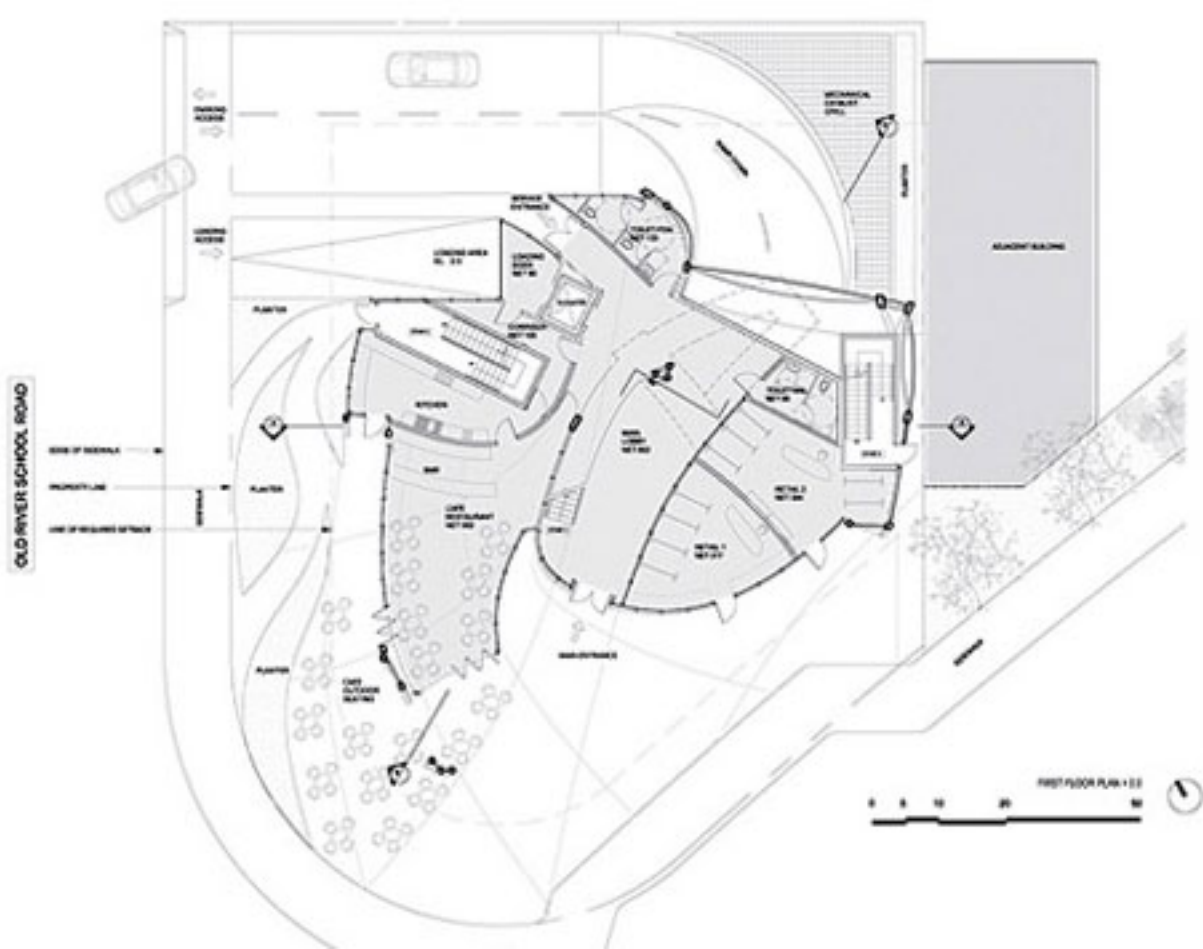
SM

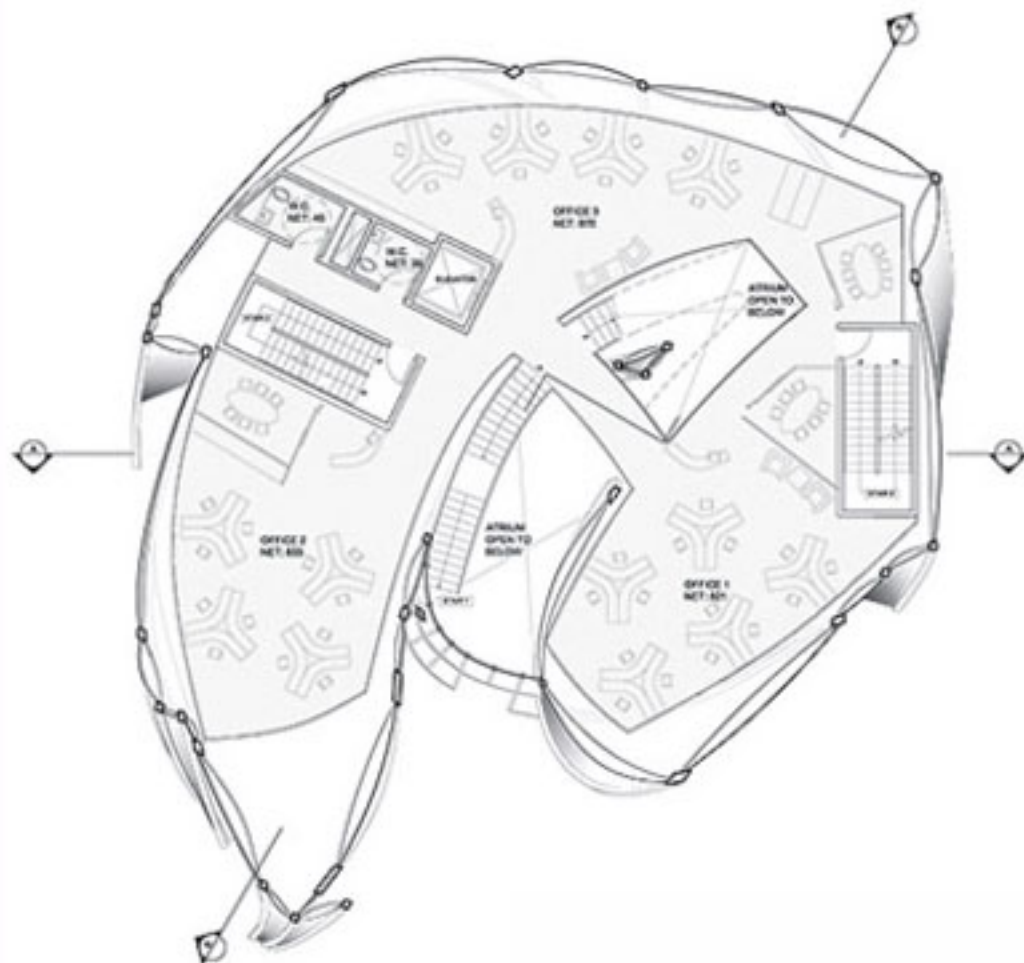
Member
FDIC



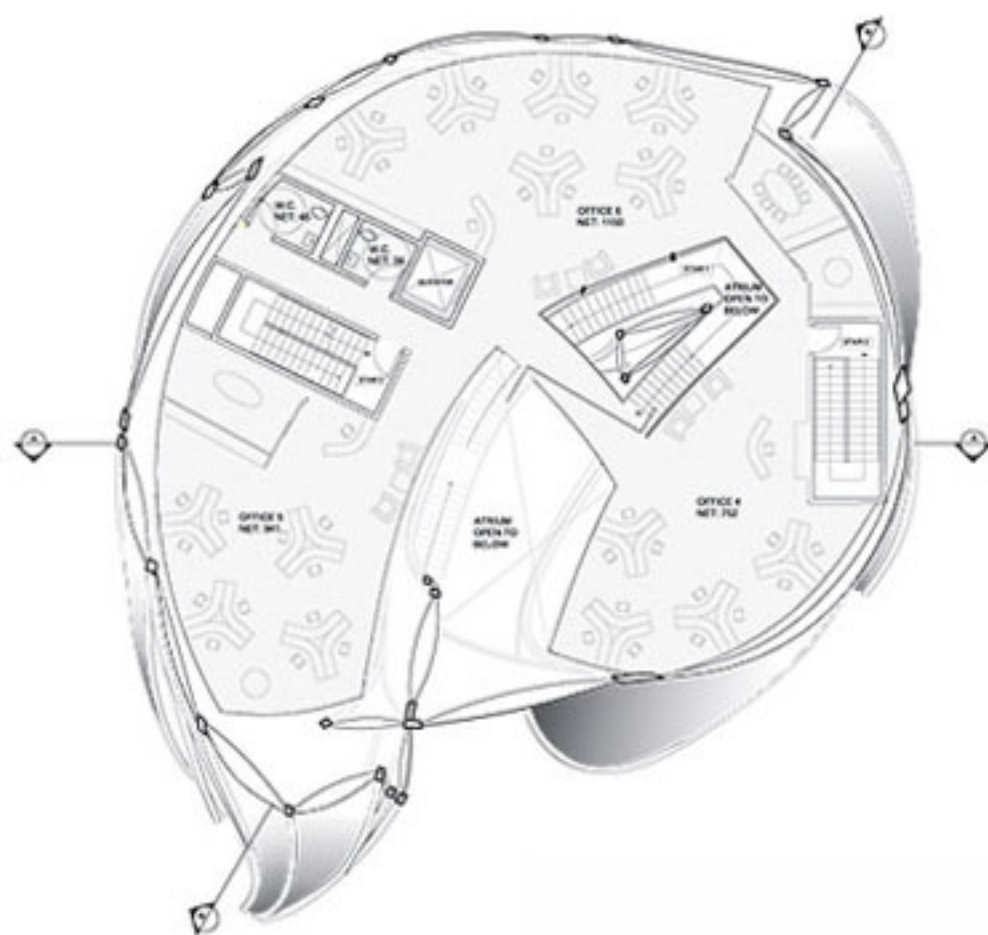


site plan

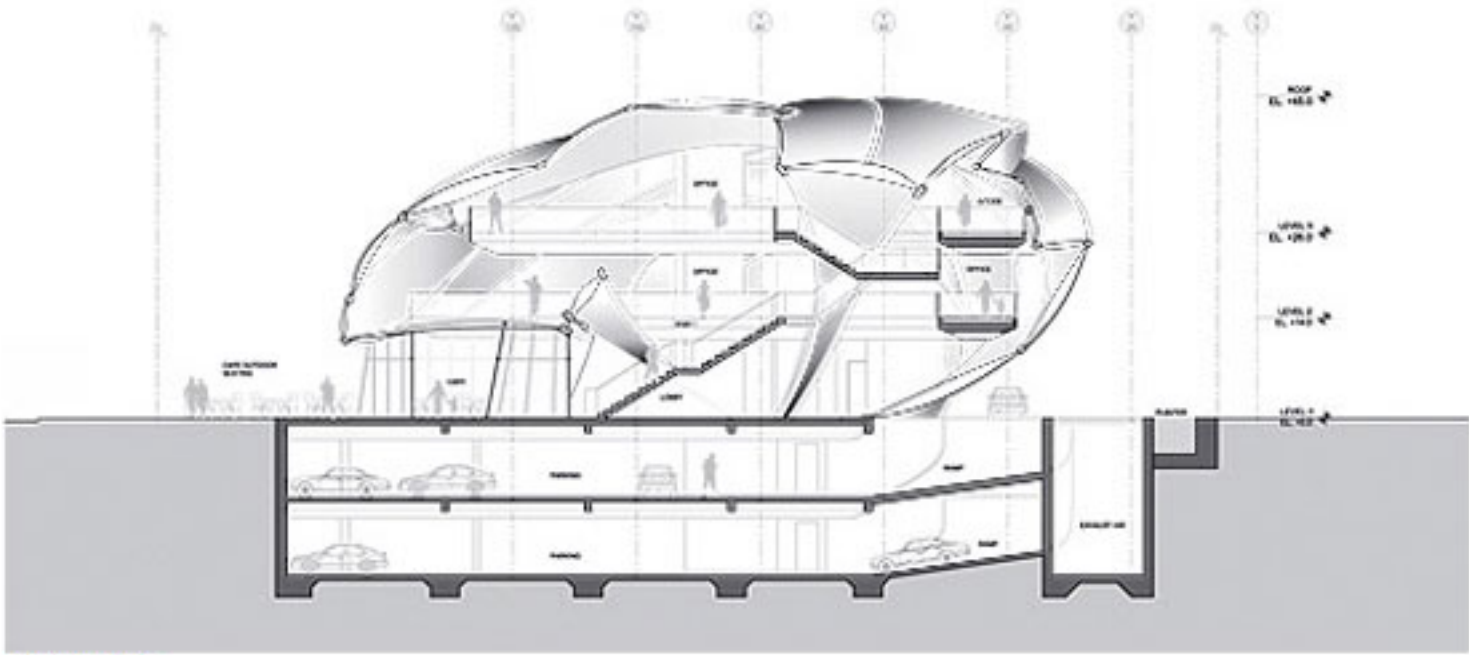




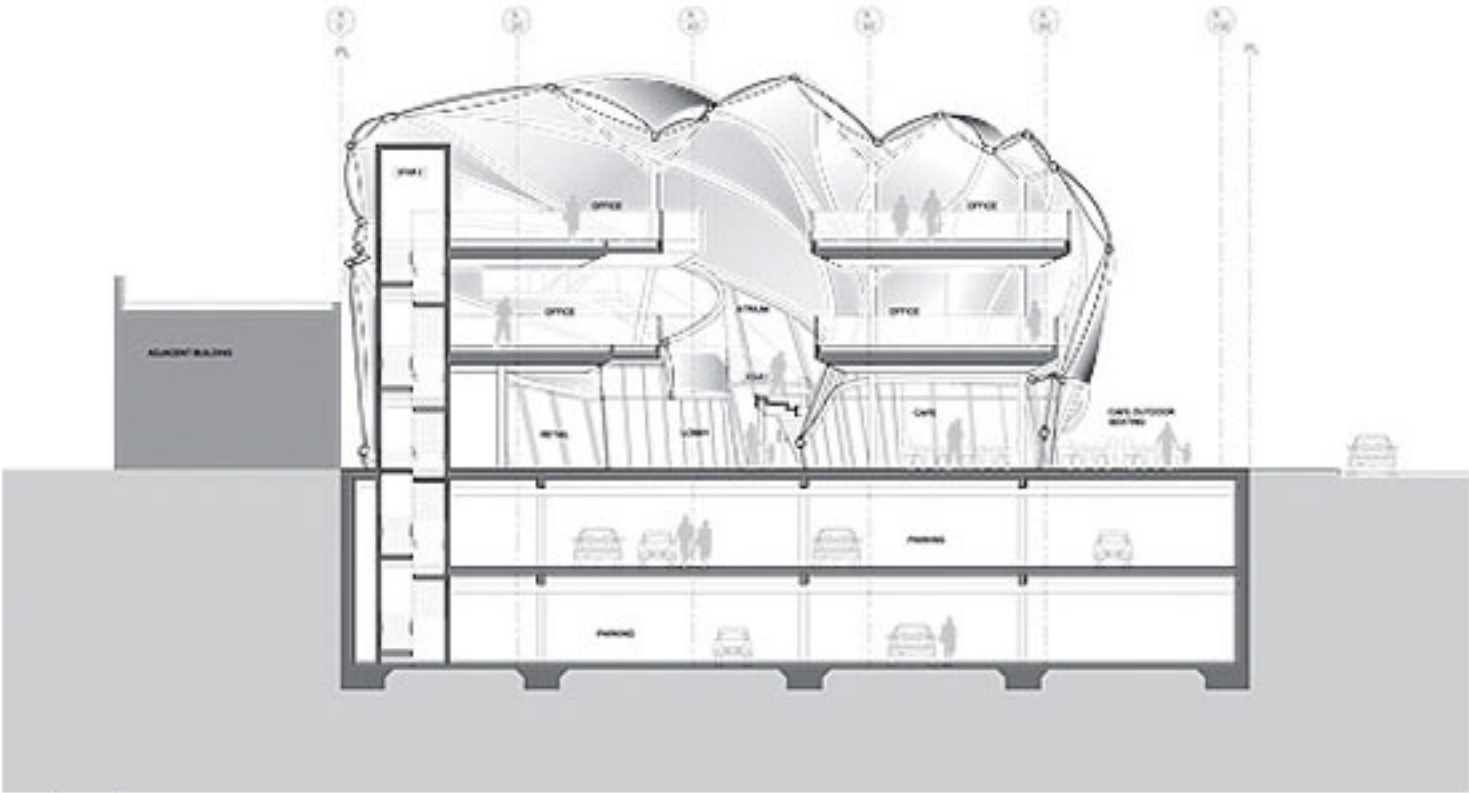
floor plan



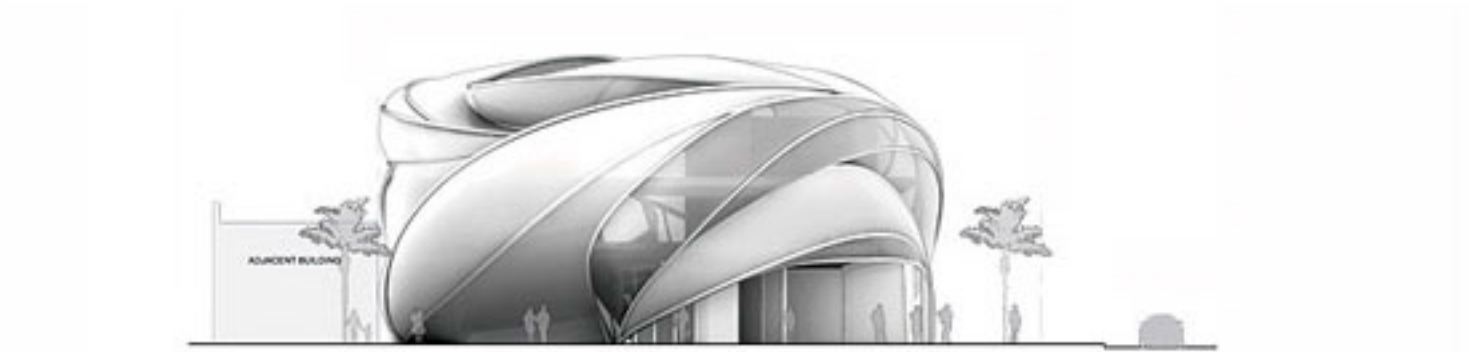
floor plan

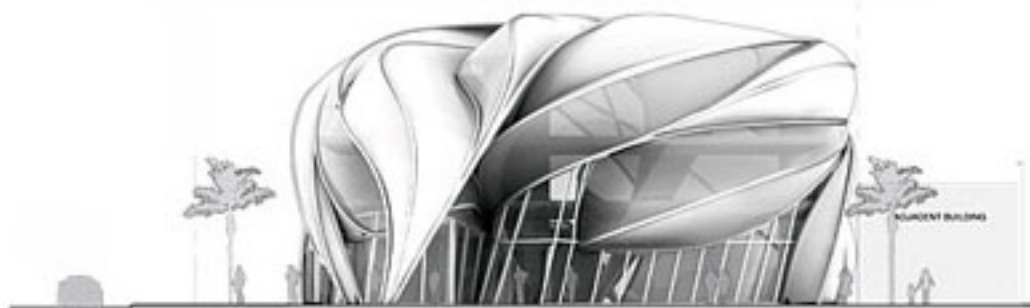


section view

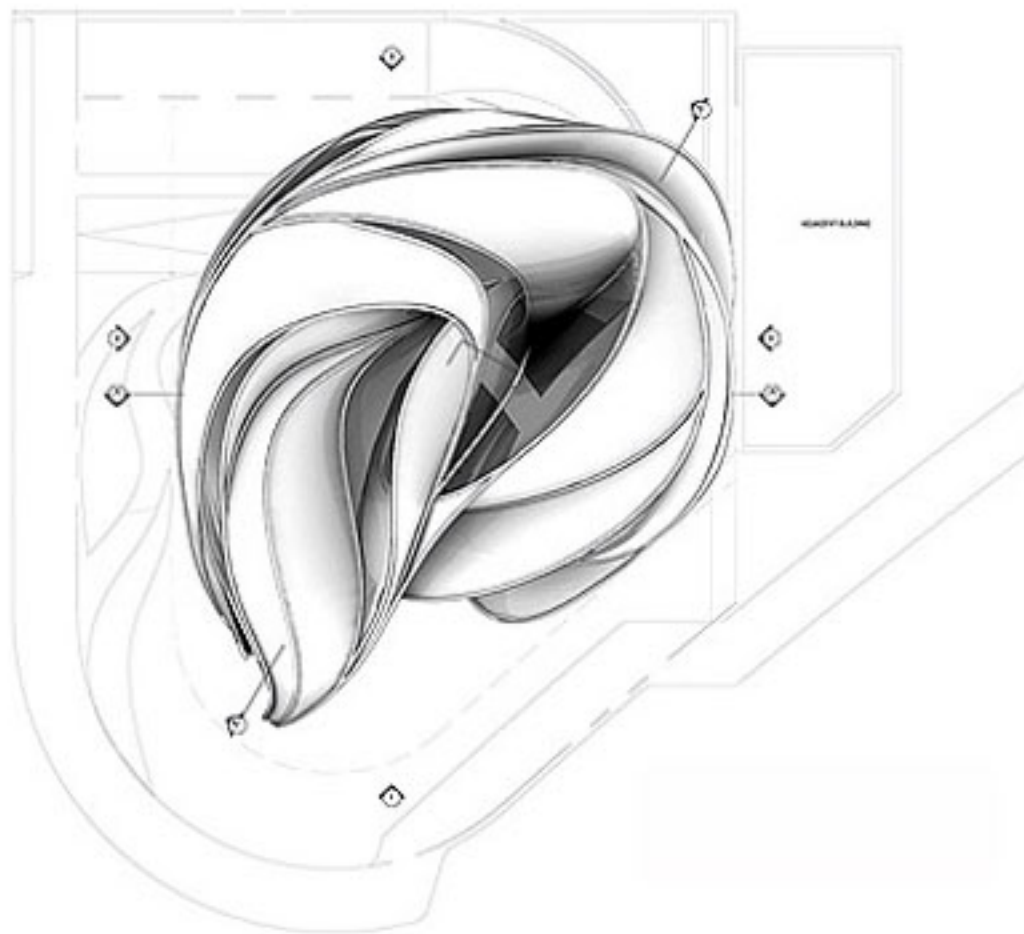


section view

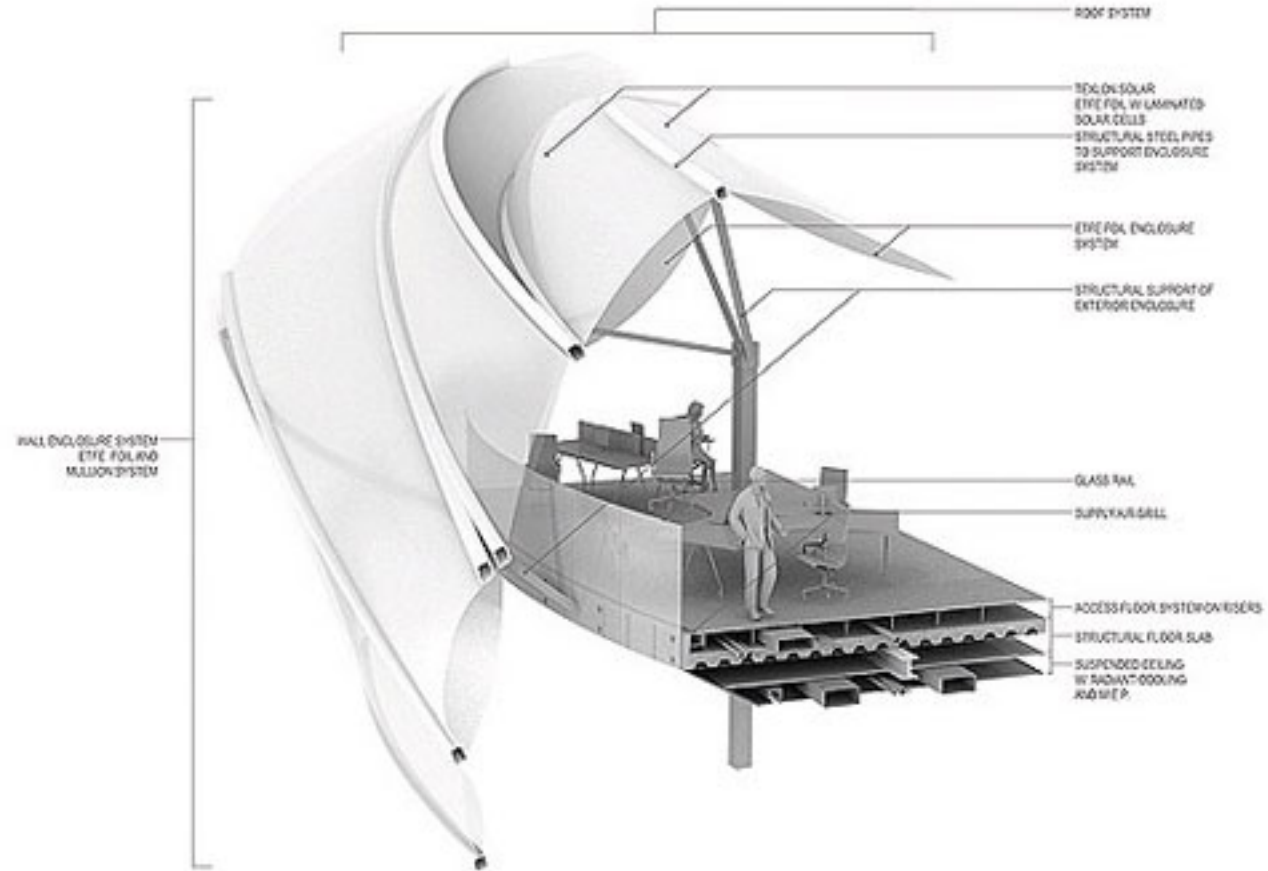




side views of the buildings



roof plan



section view of roof



areas of the building