



- [Home](#)
- [News»](#)
- [ArchShowcase](#)
- [Events»](#)
- [Tutorials](#)
- [Jobs](#)
- [Catalog»](#)
- [Videos»](#)
- [Downloads»](#)
- [Blogs](#)
- [Forums](#)
- [Books](#)
- [RSS](#)
- [Advertise](#)

AECCAFÉ Blogs

the latest posts on the AEC Industry

« [Restoration Of The Ford Assembly Building In Richmond, California](#)
[Taipei Performing Arts Center in Taiwan by B+U](#) »

Architecture Showcase



Sanjay Gangal

Sanjay Gangal is the V.P. of Sales and Marketing at IBSystems, the parent company of AECCafe.com and GISCase.Com. He has been following the AEC & GIS Industries for last 15 years. He has interviewed hundreds of AEC & GIS Executives over the years.

Firestone Mixed Use Office Building in Downey, California by B+U

March 20th, 2011 by Sanjay Gangal

The proposal for this mixed use office building in Downey, California creates a world-class landmark building aiming to enhance the cities vision as the premier quality city in the southeast area of Los Angeles County and to revitalize the industrial landscape of the site into a vital urban environment.



Firestone Building by B+U

- » Architect: [B+U, llp](#), Herwig Baumgartner, principal, Scott Uriu, principal
- » Client: Jesse Flores
- » Program: Mixed Use Office building, Café and Retail
- » Location: Downey, California
- » Size: 34,261 sqft
- » Budget: Withheld upon owner request
- » Completion Date: 2014
- » Materials: Steel, fabric, glass, concrete

Back to 'AECCafe Blogs' Architecture Showcase

Daily newsletter

» [Subscribe](#)

Recent Posts

- » [The Park Hotel in Hyderabad designed by Skidmore, Owings & Merrill opens](#)
- » [Opening Ceremony of Metropol Parasol on March 27th](#)
- » [Houtsma Site Live/Work Factory in Kostverlorenvaart, Amsterdam by Marlies Rohmer](#)
- » [Stelmat Headquarters in Cuiabá, Brazil by "about: Blank architecture"](#)
- » [Hennepin County Library in Maple Grove, Minnesota by Meyer, Scherer & Rockcastle](#)
- » [Home of the Future in Beijing, China by Laboratory for Visionary Architecture](#)
- » [Résidence St-Hubert in Canada by Naturehumaine](#)
- » [Stockholm Waterfront in Stockholm, Sweden by White Arkitekter](#)

Recent Comments

- » [Sanjay Gangal on Stelmat Headquarters in Cuiabá, Brazil by "about: Blank architecture"](#)
- » [Sanjay Gangal on Opening Ceremony of Metropol Parasol on March 27th](#)
- » [Sanjay Gangal on Houtsma Site Live/Work Factory in Kostverlorenvaart, Amsterdam by Marlies Rohmer](#)
- » [Sanjay Gangal on Hennepin County Library in Maple Grove, Minnesota by Meyer, Scherer & Rockcastle](#)
- » [Sanjay Gangal on China National Tennis Center in Beijing, China by Atelier 11](#)

Archives

Select Month

Tags

[Amsterdam](#) [Australia](#)
[Beijing](#) [Brazil](#) [Budapest](#)
[California](#) [Canada](#)
[Chicago](#) [China](#)
[Colorado](#) [Connecticut](#)
[Czech Republic](#)
[Denmark](#) [Denver](#) [Ecuador](#)



THE BENTLEY USER CONFERENCE

MAY 23-26, 2011
 PHILADELPHIA, PA USA

REGISTER NOW!

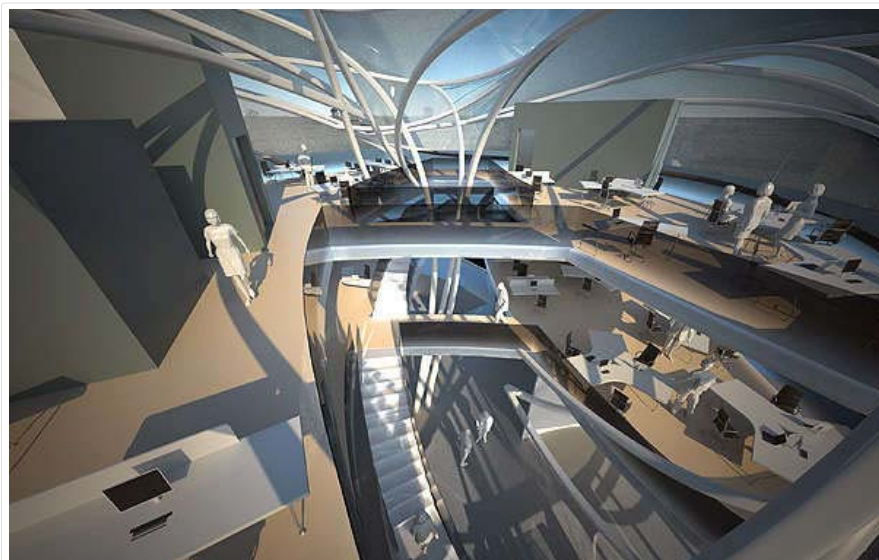


» Team: Paul Macherey, Phillip Ramirez, Justin Oh



Firestone Building by B+U

Downey is located in the southeastern part of Los Angeles County, about 12 miles southeast of downtown Los Angeles with Firestone Boulevard as its main artery connecting its city center with the two main freeways. The project is characterized by its response to the urban setting in particular to Firestone Boulevard, its vision for a unique office work environment within a highly sustainable building design, and by its formal and structural elegance.



Interior

The three level mixed use building includes a café and retail space at the ground floor and two levels of open office spaces above. The office spaces are configured around a center atrium space that opens up to Firestone boulevard creating the main entrance for the building. The ephemeral quality of the building envelope is realized through a high tech fabric enclosure system that utilizes multiple layers of fabrics with different degrees of transparencies/ opacities. This envelope is able to adjust to the different exterior light conditions and provide consistent natural daylight levels throughout the office spaces. While the more delicate fabric encloses for the upper two office levels, the restaurant and retail spaces on the ground floor open up to the street with a glass envelope. Landscape elements create a green barrier between the outdoor seating area of the café and Firestone Blvd.

Florida France
Germany Houston
Hungary Illinois India
Israel Italy Japan
London Los Angeles
Mexico Miami Minnesota
Netherlands New
York Paris Pennsylvania
Portugal Seoul Singapore
Slovenia South Korea
Spain Sweden
Taiwan Texas Tokyo
UK

Categories

- » 3ds Max
- » Airport
- » Aquarium
- » ArchiCAD
- » Arena
- » Art Gallery
- » Art Studio
- » Artificial Rock
- » Autocad
- » Autodesk Inventor
- » Bakery
- » Bar
- » Building
- » Cafe
- » Camp
- » Chapel
- » Church
- » City
- » Commercial Building
- » Concert hall
- » Courthouse
- » Courtyard
- » Cruise Port
- » Cruise Terminal & Port Service Center
- » Cultural Center
- » Dental office
- » Ecotect
- » Educational and Business Center
- » Educational Institute
- » Energy plant
- » Exhibition Center
- » Factory
- » Fire Station
- » Footbridge
- » Furniture Mall
- » Gallery
- » Garage
- » Garden
- » Golf Club
- » Golf Course
- » Government Building
- » Grasshopper
- » Hairstyling Center
- » Hospitality
- » Hotel
- » House
- » Housing Development
- » Hut
- » Industrial
- » Information Tower
- » Interiors
- » Laboratory and Office
- » Library
- » Light Rail
- » Locker Room
- » Master Plan
- » Maya
- » Medical Center
- » Memorial
- » Mixed use
- » Museum
- » Navisworks

Realistic User
Productivity
Comparisons for
Upgrade
Decision Making

Must
Read
PAPER



Download now »

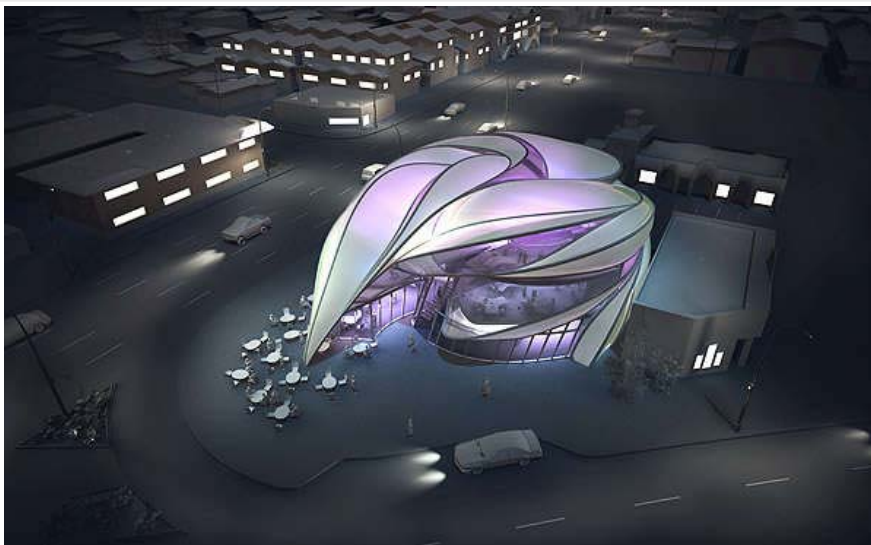
CADalog.com

Add-ons, plugins
and more for:

AutoCAD CADKey
SolidWorks TurboCAD
Rhino 3D IntelliCAD



Interior



Firestone Building at Night



Firestone Building at Night

- » [Offices](#)
- » [Parking Structure](#)
- » [Pavilion](#)
- » [Performing Arts Center](#)
- » [Planetarium](#)
- » [Plant](#)
- » [Port's public spaces](#)
- » [Power Plant](#)
- » [Public Art](#)
- » [Public Landscapes](#)
- » [Recreational facility](#)
- » [Research Station](#)
- » [Residential](#)
- » [Resort](#)
- » [Restaurant](#)
- » [Restoration](#)
- » [Retail](#)
- » [Retail facilities](#)
- » [Revit](#)
- » [Rhino](#)
- » [School](#)
- » [Science Club](#)
- » [Science Park](#)
- » [Sculpture](#)
- » [Shelter](#)
- » [Shop](#)
- » [Showroom](#)
- » [SketchUp](#)
- » [Skyscrapers](#)
- » [Sports Complex](#)
- » [Sports Hall](#)
- » [Stadium](#)
- » [Student Center](#)
- » [Sustainable Design](#)
- » [Swimming Pool](#)
- » [Theater](#)
- » [Toilet](#)
- » [Tower](#)
- » [Train Station](#)
- » [Transport & Infrastructure](#)
- » [Uncategorized](#)
- » [University Building](#)
- » [Urban Design](#)
- » [V-Ray](#)
- » [Vectorworks](#)

Meta

- » [Log in](#)
- » [Entries RSS](#)
- » [Comments RSS](#)

Ads by Google

[BIM Masters](#)

Fully integrated
BIM arch. design
7 yrs BIM exp. &
dozens of projects
www.marcatects.com

[Downey Real Estate](#)

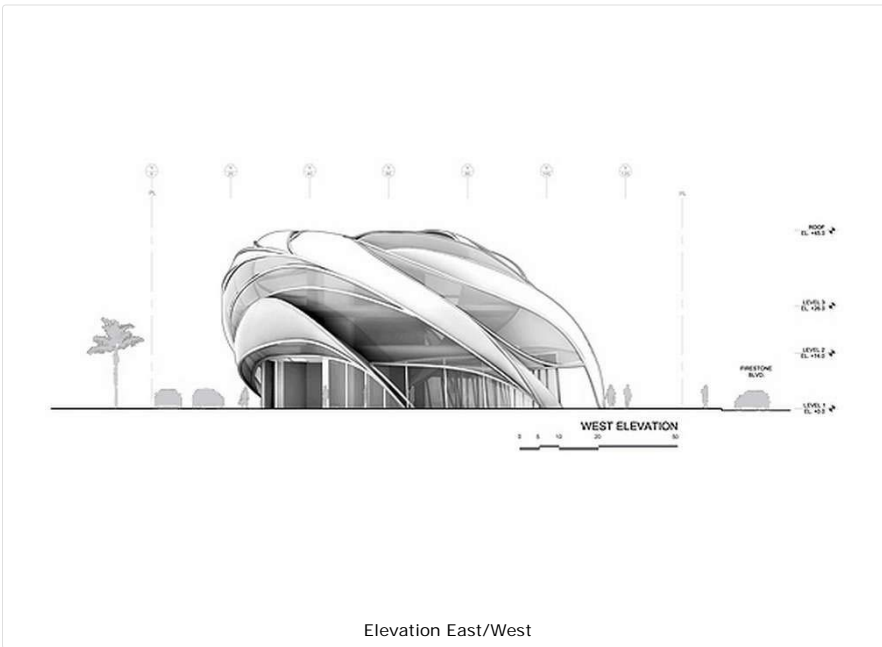
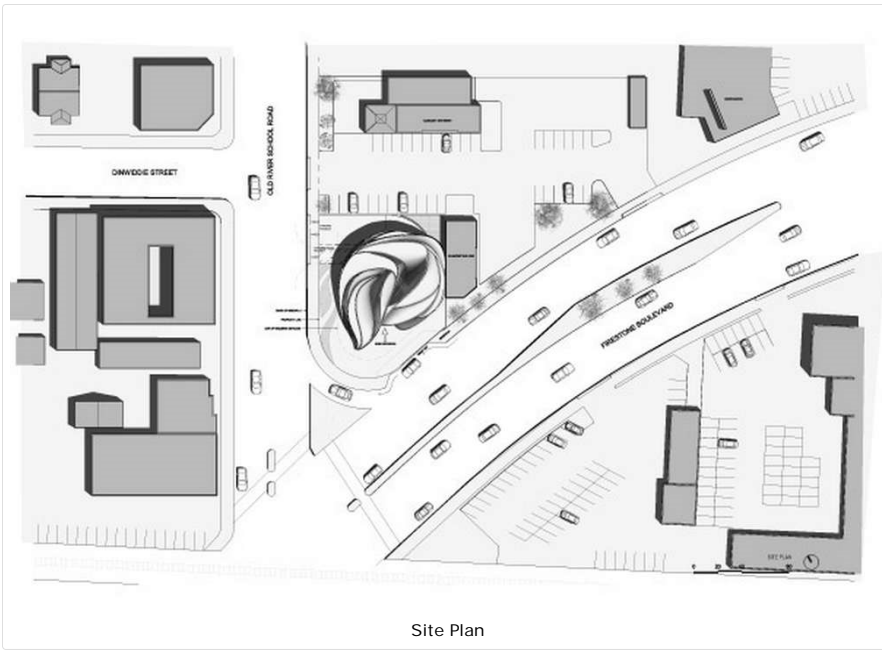
Dale Jervis- Your
Resource For
Real Estate in
Downey, CA.
www.DaleJervis.com

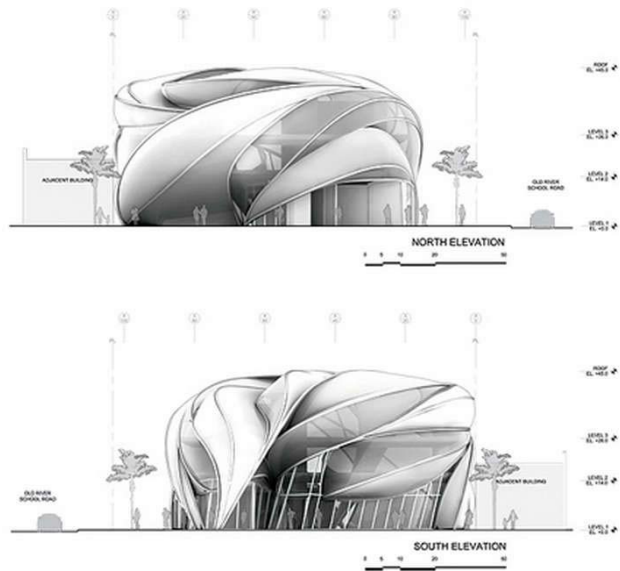
[Solar is Cheaper than SCE](#)

Save 50% with
Sullivan Solar
Power Top Solar
Firm in SoCal-
Best Price
www.SullivanSolarPower.com

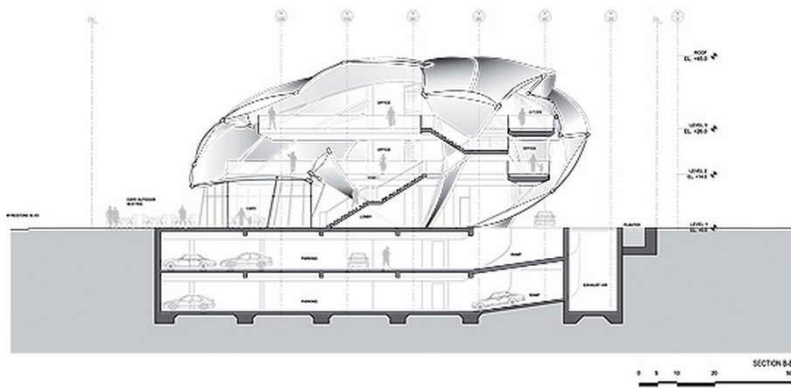
[California Solar](#)

Solar systems
design &
installation Get
Free & exact
quote in 24 hrs
www.Sungevity.com/Hor

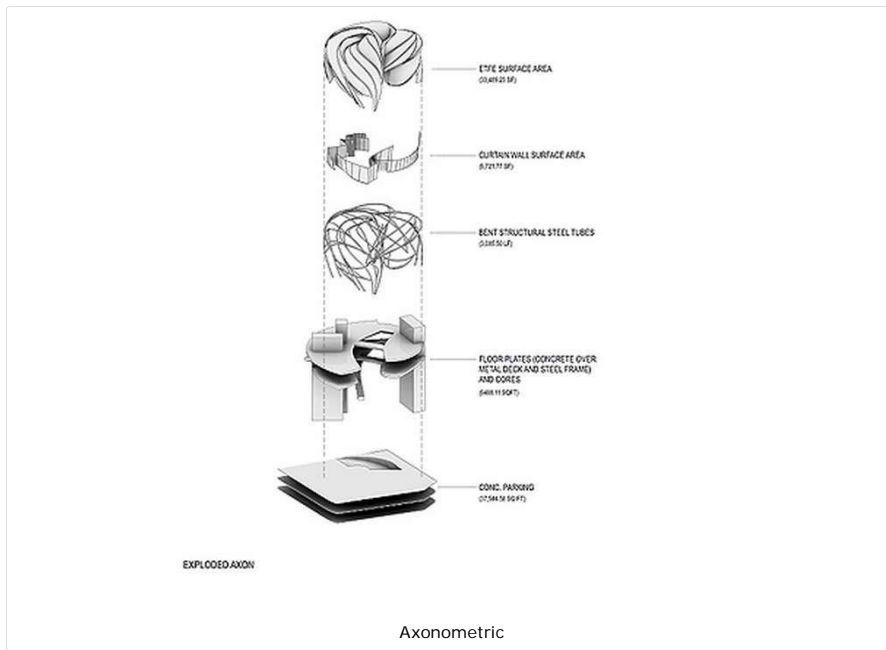




Elevation North/South



Section



Firestone Building by B+U



Firestone Building by B+U



Interior



Interior



Firestone Building at Night



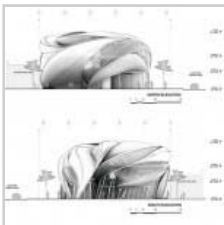
Firestone Building at Night



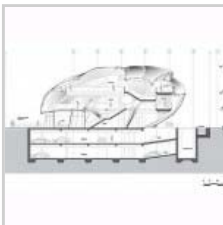
Site Plan



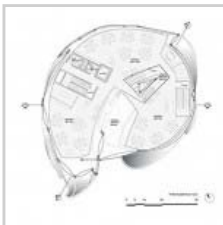
Elevation East/West



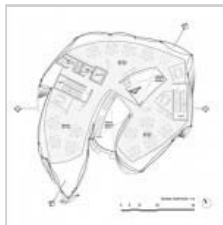
Elevation North/South



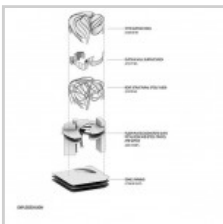
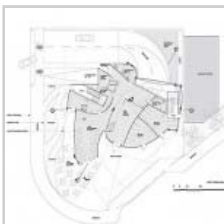
Section



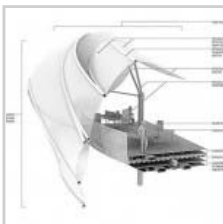
Section



Section



Axonometric



Tags: [California](#), [Downey](#)

retweet

This entry was posted on Sunday, March 20th, 2011 at 8:04 am and is filed under [Commercial Building](#), [Mixed use](#), [Retail](#).



- [Home](#)
- [News»](#)
- [ArchShowcase](#)
- [Events»](#)
- [Tutorials](#)
- [Jobs](#)
- [Catalog»](#)
- [Videos»](#)
- [Downloads»](#)
- [Blogs](#)
- [Forums](#)
- [Books](#)
- [RSS](#)
- [Advertise](#)

AECCAFÉ Blogs the latest posts on the AEC Industry

« [Firestone Mixed Use Office Building in Downey, California by B+U](#)
[Ystad Arena in Sweden by Henning Larsen Architects](#) »

Architecture Showcase



Sanjay Gangal

Sanjay Gangal is the V.P. of Sales and Marketing at IBSystems, the parent company of AECCafe.com and GISCafe.Com. He has been following the AEC & GIS Industries for last 15 years. He has interviewed hundreds of AEC & GIS Executives over the years.

Taipei Performing Arts Center in Taiwan by B+U

March 20th, 2011 by Sanjay Gangal

Urban Concept – The proposal for the Performing Arts Center in Taipei creates a world-class institution which is characterized by both its response to its urban and cultural environment, and by its formal and structural elegance. The project embraces the concept of a Grand Plaza as being a center hub between the Shilin night market and the TRTS Jiantan station. This is achieved by lifting the multiform theater off the ground and creating a covered outdoor linkage space between Cheng De Road and Wen Lin Road. This linkage space is the center access to the grand foyer and all three theaters. On the south side the Grand Plaza transitions into a garden that gently slopes up towards Jiantan road to allow for shops and restaurants to be placed underneath and accessible from street level. Both the garden and the Grand Plaza provide a large outdoor space for the thousands of pedestrians that visit this area. It is lined with shops and restaurants at the ground level and covered by a large roof of the theater above.



Taipei Performing Arts Center

- » Architect: [B+U, Ilp](#) ; Herwig Baumgartner, principal ; Scott Uriu, principal
- » Location: Taipei, Taiwan
- » Client: Taipei City Government, Department for cultural affairs
- » Program: Performing arts center- Opera house, Playhouse, Multiform Theater
- » Size: 40,000 sqm
- » Budget: 130 Million USD
- » Completion Date: Unbuilt- Competition 2008
- » Material: Steel, metal, glass
- » Interiors: Wood, concrete, glass
- » Team: Paul Macherey, Justin Oh; Phillip Ramirez, Art Zargaryan; Daniel Saltee, Yaohua Wang
- » Structural Engineer: ARUP

Back to 'AECCafe Blogs' Architecture Showcase

Daily newsletter

» [Subscribe](#)

Recent Posts

- » [The Park Hotel in Hyderabad designed by Skidmore, Owings & Merrill opens](#)
- » [Opening Ceremony of Metropol Parasol on March 27th](#)
- » [Houtsma Site Live/Work Factory in Kostverlorenvaart, Amsterdam by Marlies Rohmer](#)
- » [Stelmat Headquarters in Cuiabá, Brazil by "about: Blank architecture"](#)
- » [Hennepin County Library in Maple Grove, Minnesota by Meyer, Scherer & Rockcastle](#)
- » [Home of the Future in Beijing, China by Laboratory for Visionary Architecture](#)
- » [Résidence St-Hubert in Canada by Naturehumaine](#)
- » [Stockholm Waterfront in Stockholm, Sweden by White Arkitekter](#)

Recent Comments

- » Sanjay Gangal on [Stelmat Headquarters in Cuiabá, Brazil by "about: Blank architecture"](#)
- » Sanjay Gangal on [Opening Ceremony of Metropol Parasol on March 27th](#)
- » Sanjay Gangal on [Houtsma Site Live/Work Factory in Kostverlorenvaart, Amsterdam by Marlies Rohmer](#)
- » Sanjay Gangal on [Hennepin County Library in Maple Grove, Minnesota by Meyer, Scherer & Rockcastle](#)
- » Sanjay Gangal on [China National Tennis Center in Beijing, China by Atelier 11](#)

Archives

Select Month

Tags

[Amsterdam](#) [Australia](#)
[Beijing](#) [Brazil](#) [Budapest](#)
[California](#) [Canada](#)
[Chicago](#) [China](#)
[Colorado](#) [Connecticut](#)
[Czech Republic](#)
[Denmark](#) [Denver](#) [Ecuador](#)
[Florida](#) [France](#)
[Germany](#) [Houston](#)
[Hungary](#) [Illinois](#) [India](#)



THE BENTLEY USER CONFERENCE

MAY 23-26, 2011
 PHILADELPHIA, PA USA

REGISTER NOW!

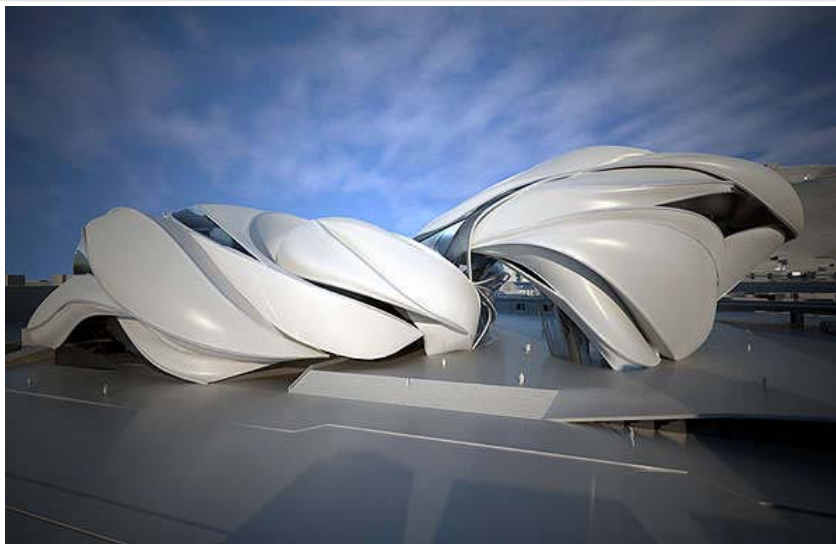


- » Mechanical engineer: ARUP
- » Associate architect: S.C.S & Associates
- » Theater Consultant: Theatre projects consultant
- » Acoustician: Nagata Acoustics



Taipei Performing Arts Center

The shops and restaurants are located along Wen Lin Road and Jian Tan Road and together with the Grand plaza and the garden space embrace Taipei's lively streetscape by creating a continuous experience from the busy streets of the Shilin night market to the Performing Arts Center and the train station. Design Concept – The proposal for the Taipei Performing Arts Center is intended to become an important landmark building in the region that expresses the richness and diversity of performing arts and creates a destination point for the area. For the development of the design we used a unique process using actual sounds as a basis. The morphology and shape of the building was designed using sound-waves that were analyzed and transformed into three dimensional vectors. These vectors became the formal and structural framework for the design of the exterior envelope. The building materializes with a metal and glass enclosure that reveals its activities in a variety of scales and angles to the city.



Taipei Performing Arts Center

Organizational Concept

Front of House

The three theaters are grouped around a center foyer accessible from the Grand Plaza. The Grand Theater and the Playhouse are located to the north while the Multiform Theater is lifted off the ground and connected to the foyer on the south side. The concept for the front of house was to create a spectacular center lobby space enclosed with glass and a Grand Stair case that connects to the main foyer of each theater. This creates a visual relationship between all three theaters and the foyers around a center space. Its' dynamic shape and glass facades is to encourage the people of Taipei to explore the building and embrace it as an exciting artistic showplace for the public. Each theater has a single control point at the main foyer level and individual circulation from there to the upper gallery levels. This allows for the general public to experience this space without necessarily accessing the theaters. The ticketing, coat check and general information for all three theaters is located on the ground level.

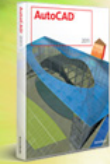
Israel Italy Japan
London Los Angeles
Mexico Miami Minnesota
Netherlands New
York Paris Pennsylvania
Portugal Seoul Singapore
Slovenia South Korea
Spain Sweden
Taiwan Texas Tokyo
UK

Categories

- » 3ds Max
- » Airport
- » Aquarium
- » ArchiCAD
- » Arena
- » Art Gallery
- » Art Studio
- » Artificial Rock
- » Autocad
- » Autodesk Inventor
- » Bakery
- » Bar
- » Building
- » Cafe
- » Camp
- » Chapel
- » Church
- » City
- » Commercial Building
- » Concert hall
- » Courthouse
- » Courtyard
- » Cruise Port
- » Cruise Terminal & Port Service Center
- » Cultural Center
- » Dental office
- » Ecotect
- » Educational and Business Center
- » Educational Institute
- » Energy plant
- » Exhibition Center
- » Factory
- » Fire Station
- » Footbridge
- » Furniture Mall
- » Gallery
- » Garage
- » Garden
- » Golf Club
- » Golf Course
- » Government Building
- » Grasshopper
- » Hairstyling Center
- » Hospitality
- » Hotel
- » House
- » Housing Development
- » Hut
- » Industrial
- » Information Tower
- » Interiors
- » Laboratory and Office
- » Library
- » Light Rail
- » Locker Room
- » Master Plan
- » Maya
- » Medical Center
- » Memorial
- » Mixed use
- » Museum
- » Navisworks
- » Offices
- » Parking Structure
- » Pavilion
- » Performing Arts Center
- » Planetarium
- » Plant
- » Port's public spaces
- » Power Plant
- » Public Art
- » Public Landscapes

Realistic User
Productivity
Comparisons for
Upgrade
Decision Making

Must
Read
PAPER



Download now >>>

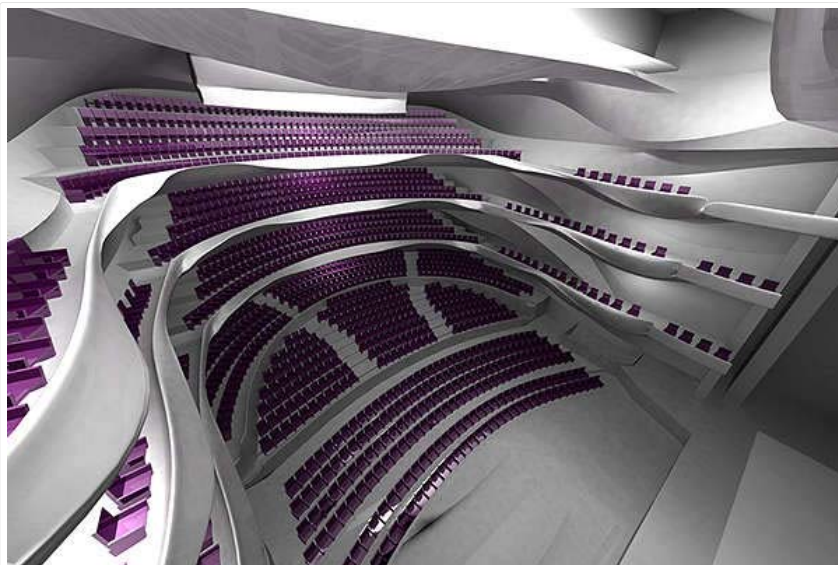
CADalog.com

Add-ons, plugins
and more for:

AutoCAD SolidWorks Rhino 3D CADKey TurboCAD IntelliCAD



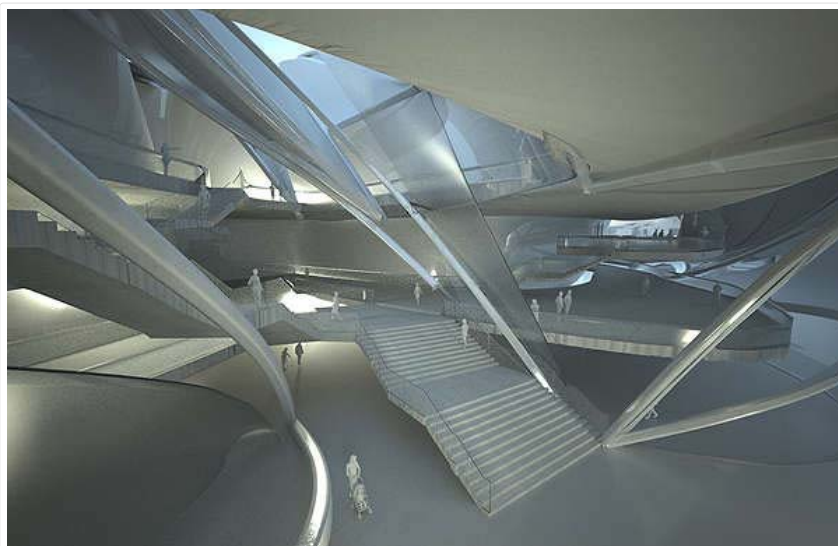
EXTRAORDINARY
CHAMBERS



Grand Theater

Theater Concept

The concept for the theaters was to design a flexible world class performance space that allows for a variety of different performance genres and is especially tailored to the needs of the Taiwanese interdisciplinary performing arts scene. The Grand Theater seats 1500 people with a main floor and three balcony levels. It can easily be configured to support performances that range from opera, ballet and orchestra performances to multidisciplinary performances including drama, dance, multimedia performances, drum –percussions, Zen meditation, martial arts, etc. The 800 seat Playhouse is designed as a proscenium theater with two balcony levels. However the orchestra pit was designed to support different performance styles. The Multiform Theater has a total of 800 seats with two balcony levels and maximum flexibility in regards to stage and seating layout and is designed to allow for a variety of configurations including center stage, thrust stage and front stage configurations.



Grand Stair & Lobby

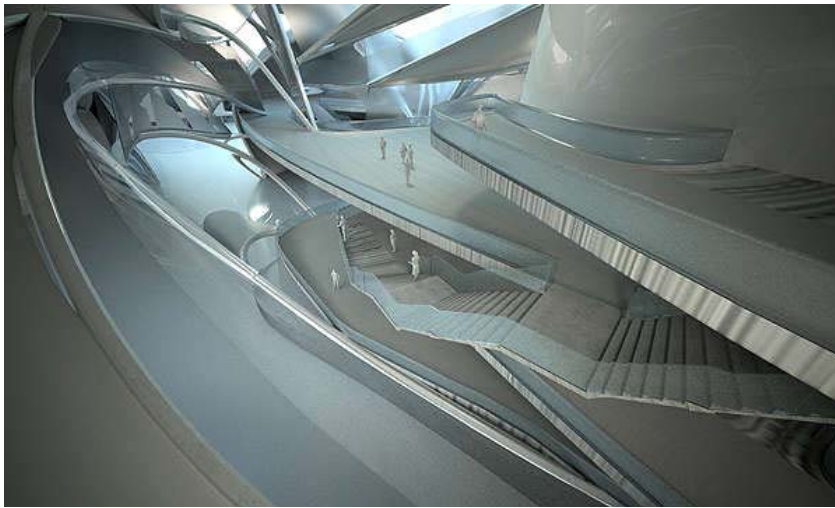
Back of House

The back of house is organized most efficiently and designed as a state of the art venue that fulfills all the requirements of the various forms of contemporary performing arts and complies with the needs of Taiwan's diverse performance culture. Back of house areas for the Grand Theater and the Playhouse are located to the north across Bailing High School and with direct and easy access to all stages. Each theater has a separate backstage access from Cheng De Road and Ji Ho Road. Both theaters share the loading dock while individual scenery assembly spaces and large orchestra rehearsal are located with direct adjacency to the stage. The majority of the rehearsal and dressing rooms are in close proximity of the stage to allow for easy and convenient access. The administration offices, conference rooms and the library are located directly above the back stage and are overlooking Bailing High School. The back of house for the Multiform Theater is located on level 5&6 on the south side and adjacent and below the Theater. The back of house area is connected to the underground loading dock with a large freight elevator. The Multiform Theater has a separate back stage access from the Grand Plaza.

- » [Recreational facility](#)
- » [Research Station](#)
- » [Residential](#)
- » [Resort](#)
- » [Restaurant](#)
- » [Restoration](#)
- » [Retail](#)
- » [Retail facilities](#)
- » [Revit](#)
- » [Rhino](#)
- » [School](#)
- » [Science Club](#)
- » [Science Park](#)
- » [Sculpture](#)
- » [Shelter](#)
- » [Shop](#)
- » [Showroom](#)
- » [SketchUp](#)
- » [Skyscrapers](#)
- » [Sports Complex](#)
- » [Sports Hall](#)
- » [Stadium](#)
- » [Student Center](#)
- » [Sustainable Design](#)
- » [Swimming Pool](#)
- » [Theater](#)
- » [Toilet](#)
- » [Tower](#)
- » [Train Station](#)
- » [Transport & Infrastructure](#)
- » [Uncategorized](#)
- » [University Building](#)
- » [Urban Design](#)
- » [V-Ray](#)
- » [Vectorworks](#)

Meta

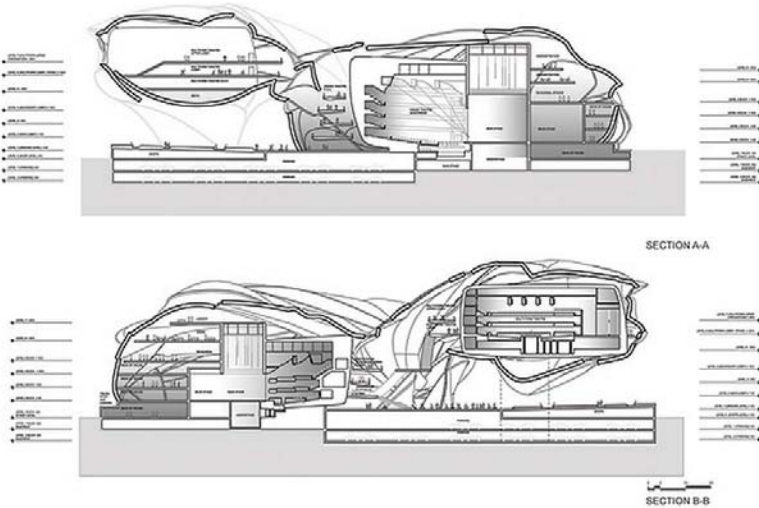
- » [Log in](#)
- » [Entries RSS](#)
- » [Comments RSS](#)



Grand Theater Lobby



Site Plan



Section A-B

